



KENSINGTON



FRANKFORD



BRIDESBURG



WISSINOMING



BURHOLME



OLNEY



LAWNDALE



CRESCENTVILLE



FOX CHASE



BUSTLETON



SOMERTON



BYBERRY



TACONY



HOLMESBURG



PLEASANT HILL



TORRESDALE

GREATER NORTHEAST PHILADELPHIA CHAMBER OF COMMERCE

**inBUSINESS**

SPECIAL 100th ANNIVERSARY ISSUE

**G N P C C**

**100**

**1922 • 2022**

**Greater Northeast Philadelphia  
Chamber of Commerce**  
*Smart Business Connections*

Our single voice will continue to strengthen the engagement among all industries to achieve a common goal: to serve the Greater Northeast Philadelphia region positively, for the next 100 years.



## Powering Partnerships.

At PECO, we recognize the immense value that chambers of commerce provide and we are committed to providing best-in-class services to businesses that help our communities grow and prosper. As your community partner, PECO employees invest thousands of volunteer hours in neighborhoods throughout our service region, and we contribute more than \$6 million each year to diverse programs that promote education, the environment, arts and culture, and safe communities where every individual is valued and respected.

PECO is proud to support the Greater Northeast Philadelphia Chamber of Commerce Gala.



© PECO Energy Company, 2022. All rights reserved.



# Meet the Board

## BOARD OF DIRECTORS

### EXECUTIVE

**Ken Wong, Chair**  
CIG Asia, Ltd.

**Joe O'Drain, Vice Chair**  
CBIZ, Inc.

**Eric Nelson, MBA, Treasurer**  
Holy Family University

**George Zauflik, Consulting Chair**  
Christ's Home

**Daniel P. McElhatton, esq. Vice President**  
McElhatton Foley, P.C.,

**Nancy Morozin, Vice President**  
The Dining Car

### DIRECTORS

**Darryl H. Beard**  
Jefferson Health Northeast

**Richard J. Galup**  
Jefferson Health Northeast

**Altoro Hall**  
Department of Commerce | City of Philadelphia

**John McKinnon**  
Wawa, Inc.

**Edward O'Dell, DO, FACOI**  
Nazareth Hospital - Trinity Healthcare

**Michelle Saldutti**  
Parx Casino

**Florian Teme**  
Philadelphia Gas Works

**Tom Waring**  
Northeast Times/Newspaper Media Group

### BOARD OF GOVERNORS

**Frank M. Porrazza**  
TF Square

**Edward McBride**  
PECO

### STAFF

**Pam Henshall**  
President

**Lindsey Miller**  
Director of Events



## Letter from the President:



As we close the year with reflection, we have focus and excitement for the future.

It's hard to imagine what our founders would think about our modern Chamber. Over this year, a few of us invested time in reading the many articles describing the expansion of industry and housing throughout the area and focusing on the impact of being a good civic citizen. There was a passion and art of the written word and messaging to the community promoting Northeast Philadelphia as

an innovative trendsetter filled with a bright future and promise. Sure, some of the opinions were defiant from a few naysayers; however, you can sense their commitment to the region.

Today we also have a robust organization and a desire to move forward as a pacesetter supporting the greater Northeast Philadelphia community. With the support of our engaged Board of Directors, Committees, and Membership, we are growing and continue to be an advocate and partner by representing the region. We know our founders would be proud. Cheers to the next 100 years! ●

Best,

**Pam Henshall, President**

Greater Northeast Philadelphia Chamber of Commerce

**inBUSINESS** is published by the Greater Northeast Philadelphia Chamber of Commerce ©2022.

#### Contributors

Pam Henshall  
Jack McCarthy  
Daniel P. McElhatton  
Gloria Pugliese

#### Events/Marketing Committee

Gene Burns  
Pam Henshall  
Doug Hillebrecht  
Lindsey Miller  
Ray Rysak

**Please direct all advertising and editorial inquiries to:**

#### GNPCC

8025 Roosevelt Boulevard  
Suite 200  
Philadelphia, PA 19152

215.332.3400

[info@nephilachamber.com](mailto:info@nephilachamber.com)

#### Layout & Design

Gene Burns Graphic Design



### Gene Burns Graphic Design

**Created for clarity. Designed for results.**

Innovative design solutions explain complex ideas and empower your audience to comprehend, understand, and take action.

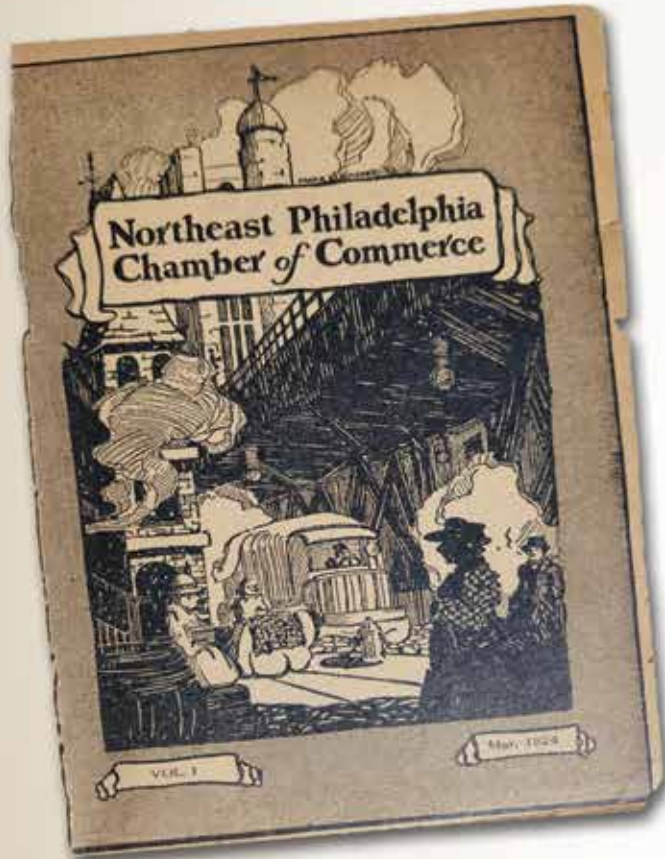


Congratulations to the GNPCC!  
Gene Burns is the proud designer  
of the inBUSINESS Magazine and  
GNPCC 100th anniversary logo.

7342 Shisler St., Phila., PA 19111 | 215.913.5735 | [gene@burnsgraphicdesign.com](mailto:gene@burnsgraphicdesign.com)

# THEN AND NOW

| By: Pam Henshall, President, Greater Northeast Philadelphia Chamber of Commerce



## THEN...

**Northeast Philadelphia Chamber of Commerce  
Newsletter Vol. 1 Issue 1. (1924)**

The Chamber of Commerce or –?

Who has not heard someone say, “Oh, I can’t join the Chamber of Commerce; I belong to too many organizations already?”

The last part of that popular saying is in 99 cases out of 100 correct. There are a few men who do not belong to too many organizations. But why take revenge on the Chamber of Commerce?

We will admit that there are many organizations in this city and every other city. Many of them, or perhaps most of them, have their place, but their objects are specialized. The object of the Chamber of Commerce is the broadest of any voluntary organization in America. The Chamber of Commerce is the great American business men’s all-inclusive institution.

The Chamber of Commerce is the only club or organization where every creed and religion meets, where the owner of the small business can work side by side with the biggest manufacturer; where men are known for what they do and not for what they own; where membership is not limited to any number or group; where there is but one major object – to make a better Northeast Philadelphia.

You can think of no other organization where you have so great an opportunity to do public work and see bigger results as in the Chamber of Commerce.

Consider these things and then settle in your own mind as to whether you should put your greater efforts into the Northeast Philadelphia Chamber of Commerce or in some other organization. There is no competitor to the Chamber of Commerce. It is the great master organization of all civic organizations in the city. You either belong to it or you don’t – you can’t belong to “something just as good.”

If you are already a member it is your duty to bring in another member.

If you are not a member and claim to be a loyal citizen of Northeast Philadelphia there is only one honest thing that you can do.

**JOIN TODAY\***

\*Source: Northeast Philadelphia Chamber of Commerce Newsletter. (1924).

## NOW...

Over the past year, we’ve taken some time to read through the beautifully bound Chamber newsletters dating back to the first edition in 1924. Spectacular hand-drawn illustrations; detailed articles reporting on new development in the latest state-of-the-art airport; active member committee reports focusing on legislation, industrial, transportation, civic, traffic and safety, and retail; and humorous ads to grab anyone’s attention to sell a product or service. You can feel commitment, passion, and pride as you turn every page.

Articles years ago would gripe about traffic and the rising cost of fuel and energy much as we do today. Ads would grab readers’ attention and be promoted by Reddy Kilowatt,

the mascot from Philadelphia Electric Company (PECO), by claiming, “Your better half – the Mrs. – will be delighted when you buy her a state-of-the-art electric range!” In addition to personal stories of businessmen and editorials describing the optimistic future of Northeast Philadelphia.

### So, what changed? The Audience.

Although we can relate to some issues from a century ago, we should be proud of how far we have come and the opportunities available for today’s professional and business owners. Northeast Philadelphia has many manufacturers, family-owned companies, thriving international communities, spectacular restaurants, engaged educational institutions, leading healthcare services, and connected small businesses throughout the region.

No longer is the focus to develop boys into men, from the playground to the board room. The boardroom is growing, and more voices are being heard. Today minorities, veterans, women, and men are taking seats at the table. Although we have a long way to go, the Greater Northeast Philadelphia Chamber of Commerce’s history shows we’ve come a long way.

Cheers to the next 100 years! ●





# GNPCC Member Listing by Join Date

| Years | Member Name                               | Year Joined | Years | Member Name  | Year Joined | Years | Member Name                                       | Year Joined |
|-------|---|-------------|-------|--|-------------|-------|---|-------------|
| 100   | PECO                                      | 1921        | 17    | Sweet Lucy's Smokehouse                            | 2005        | 4     | GOGO Charters Philadelphia                        | 2018        |
| 100   | Kingsbury, Inc.                           | 1923        | 17    | EZ Storage   | 2005        | 4     | Candlewood Suites Bensalem Philadelphia Area      | 2018        |
| 90    | N A O, Inc.                               | 1934        | 17    | Keystone Outdoor Advertising Co, Inc.              | 2005        | 4     | Orleans Technical College                         | 2018        |
| 85    | Philadelphia Gas Works                    | 1937        | 17    | The Dining Car                                     | 2005        | 4     | Philadelphia Charter Bus Company                  | 2018        |
| 57    | Northeast Family YMCA                     | 1965        | 17    | Keystone First                                     | 2005        | 4     | Rivers Casino Philadelphia                        | 2018        |
| 55    | Jefferson Health Northeast                | 1967        | 16    | Aviation Institute of Maintenance                  | 2006        | 4     | Cranleith Spiritual Center                        | 2018        |
| 52    | Nazareth Hospital                         | 1970        | 16    | Three Monkeys Cafe                                 | 2006        | 4     | Ally Charter Bus Philadelphia                     | 2018        |
| 46    | NE Community Center for Behavioral Health | 1976        | 16    | KleinLife  | 2006        | 4     | FCL Builders                                      | 2018        |
| 45    | Motel 6                                   | 1978        | 16    | Berkshire Hathaway Real Estate                     | 2006        | 4     | Area Public Adjusters                             | 2018        |
| 41    | Northeast Times/NMG                       | 1981        | 16    | Adventure Alley Learning Center, LLC               | 2006        | 4     | Girl Scouts of Eastern Pennsylvania               | 2018        |
| 40    | Holy Family University                    | 1982        | 15    | HBK Engineering, LLC                               | 2007        | 4     | DCD Contracting, Inc                              | 2018        |
| 40    | Hillock Anodizing, Inc.                   | 1983        | 15    | Cardone Industries                                 | 2007        | 3     | The SE Penn. Manufacturing Alliance – SEPMA       | 2019        |
| 40    | F. P. Woll & Company                      | 1983        | 15    | LGDirect Sales Solutions                           | 2007        | 3     | Meridian Bank                                     | 2019        |
| 40    | Petner Funeral Home                       | 1983        | 14    | American Kitchen Machinery & Repair                | 2008        | 3     | Gerhard's Appliances                              | 2019        |
| 37    | Comcast                                   | 1985        | 13    | Ellis Coffee Co.                                   | 2009        | 3     | JEVS Human Services                               | 2019        |
| 34    | Heritage Insurance Services, Inc.         | 1988        | 13    | ShopRite – Knorr Street                            | 2009        | 3     | CIG Asia, Ltd.                                    | 2019        |
| 34    | Philadelphia Mills Shopping Mall          | 1988        | 12    | Republic Bank, NA                                  | 2010        | 3     | Graziella Public Relations and Events             | 2019        |
| 31    | Independence Blue Cross                   | 1991        | 12    | Comcast Business                                   | 2010        | 3     | Christs Home                                      | 2019        |
| 30    | Philadelphia Industrial Development Corp. | 1992        | 12    | KDI Office Technology                              | 2010        | 3     | Gateway Mortgage Group                            | 2019        |
| 30    | David Tours & Travel                      | 1992        | 12    | Liberty Roofing, Inc.                              | 2010        | 3     | Truly Pure and Natural, LLC                       | 2019        |
| 30    | Complete Ground Maintenance, Inc.         | 1992        | 12    | Community Integrated Services                      | 2010        | 3     | NavPac Advisors LLC                               | 2019        |
| 30    | Self Help Movement, Inc.                  | 1992        | 11    | Concrete Cutting Systems, Inc.                     | 2011        | 3     | DeGerolamo Financial Strategies                   | 2019        |
| 29    | Brunell and Sons                          | 1993        | 11    | Morey's Piers                                      | 2011        | 3     | Sherwood Strategic Advisors                       | 2019        |
| 29    | WSFS Bank                                 | 1993        | 11    | Cradle of Liberty Council, Boy Scouts of America   | 2011        | 3     | 1847Financial                                     | 2019        |
| 29    | Cannstatter Volksfest Verein              | 1993        | 11    | Mayfair Diner                                      | 2011        | 3     | McCarter & English, LLP                           | 2019        |
| 29    | Country Club Restaurant & Pastry Shop     | 1993        | 10    | Huntingdon Valley Bank                             | 2012        | 2     | Viral Ideas Marketing                             | 2020        |
| 28    | Philadelphia Department of Commerce       | 1994        | 10    | Kahmar Electric, Inc.                              | 2012        | 2     | Flawwlezz Standards LLC                           | 2020        |
| 28    | Glen Foerd on the Delaware                | 1994        | 10    | Goldstein's Rosenberg's Raphael-Sacks              | 2012        | 2     | Peirce College                                    | 2020        |
| 28    | Chapman Ford Volkswagen                   | 1994        | 10    | Teamsters Local Union No. 830                      | 2012        | 2     | Cowboy Coffee Roastery                            | 2020        |
| 28    | The Philadelphia Protestant Home          | 1994        | 10    | New York Life                                      | 2012        | 2     | Gerben Law Firm, PLLC                             | 2020        |
| 28    | Sandmeyer Steel Company                   | 1994        | 9     | Cafe Michelangelo                                  | 2013        | 2     | Goldman Sachs 10,000 Small Businesses             | 2020        |
| 27    | Paul's Run Retirement Community           | 1995        | 9     | Pepsi Beverage Co.                                 | 2013        | 2     | Crunch Fitness                                    | 2020        |
| 27    | Philadelphia Federal Credit Union         | 1995        | 9     | Spike's Trophies                                   | 2013        | 1     | Community Options Inc                             | 2021        |
| 26    | Community College of Philadelphia         | 1996        | 9     | CBIZ, Inc.   | 2013        | 1     | JBA Insurance Brokers                             | 2021        |
| 26    | Law Offices of Daniel P. McElhatton, P.C. | 1996        | 9     | Grisafi Music Institute                            | 2013        | 1     | Semanoff Ormsby Greenberg & Torchia LLC           | 2021        |
| 26    | Knights Abstract, Inc.                    | 1996        | 8     | Anthony Louis Bruni, A.T., Cert. A.C.A.            | 2014        | 1     | Health & Benefits Partners LLC                    | 2021        |
| 26    | Nazareth Academy High School              | 1996        | 8     | Fraternal Order of Police Lodge 5                  | 2014        | 1     | Cogent Connections                                | 2021        |
| 26    | Archbishop Ryan High School               | 1996        | 8     | Kartha Financial, Inc.                             | 2014        | 1     | Caring for Friends                                | 2021        |
| 26    | Father Judge High School                  | 1996        | 8     | Northeast Sunrises Rotary Club                     | 2014        | 1     | Carpenters Local Union 158 of Philadelphia        | 2021        |
| 26    | Wesley Enhanced Living                    | 1996        | 8     | Cora Services, Inc.                                | 2014        | 1     | Bucks County Community College                    | 2021        |
| 26    | PNC Bank, Inc                             | 1996        | 7     | Philadelphia Academy Charter School                | 2015        | 1     | KLS   | 2021        |
| 26    | American Heritage Federal Credit Union    | 1996        | 7     | Inverse Paradox                                    | 2015        | 1     | Atlee Hall Attorneys at Law                       | 2021        |
| 26    | Philadelphia Phillies Baseball Club       | 1996        | 7     | Modern Optometry, Inc.                             | 2015        | 1     | Time To Eat Pennsylvania                          | 2021        |
| 26    | Wawa, Inc.                                | 1996        | 7     | Steamfitters Local Union 420                       | 2015        | 1     | Grisafi Music Institute of Ambler                 | 2021        |
| 25    | St. Hubert Catholic High School for Girls | 1997        | 7     | Penn State Abington                                | 2015        | 1     | Jacqueline Talpa - Century 21 Advantage Gold      | 2021        |
| 25    | ShopRite – Roosevelt Blvd./Morrell        | 1997        | 6     | TFSquared  | 2016        | 1     | Combined Insurance c/o Walter T Long              | 2021        |
| 25    | The Union League Golf Club at Torresdale  | 1997        | 6     | Simplifi Payroll & HR                              | 2016        |       | Allstate – Tyreese Wells                          | 2022        |
| 25    | State Farm Insurance                      | 1997        | 6     | Sun Federal Credit Union                           | 2016        |       | Bethel DeliveranceChurch Northeast                | 2022        |
| 24    | Hancock Funeral Home Ltd.                 | 1998        | 6     | Gene Burns Graphic Design                          | 2016        |       | Kids Smiles Inc                                   | 2022        |
| 24    | Tompkins Community Bank                   | 1998        | 6     | AARP PA  | 2016        |       | Holiday Inn Express Philadelphia NE Bensalem      | 2022        |
| 24    | Special People in Northeast, Inc. (SPIN)  | 1998        | 6     | Burns Funeral Home                                 | 2016        |       | Grocery Outlet Bargain Market LLC                 | 2022        |
| 24    | AdvanSix Resins & Chemicals               | 1998        | 6     | Texas Road House                                   | 2016        |       | The Flavor Spot                                   | 2022        |
| 24    | Rosenberg, PhD, Ronald L.                 | 1998        | 6     | JEVS at Home                                       | 2016        |       | Tri-Sate Waste & Recycling                        | 2022        |
| 24    | Bensalem Township                         | 1998        | 6     | Deer Meadows Home Health & Support Services        | 2016        |       | Cornerstone Home Care                             | 2022        |
| 23    | Gloria Dei Estates                        | 1999        | 6     | Islamic Society of Greater Philadelphia            | 2016        |       | Biondo Creative                                   | 2022        |
| 23    | Dave & Buster's                           | 1999        | 6     | Philadelphia Insectarium & Butterfly Pavilion, Inc | 2016        |       | Second Star Travel                                | 2022        |
| 23    | Northeast High School                     | 1999        | 6     | The Print Shop and More, LLC                       | 2016        |       | Office of Worker Protections City of Philadelphia | 2022        |
| 23    | Chalie Neill Plumbing & Heating           | 1999        | 5     | FASTSIGNS of Northeast Philly                      | 2017        |       | TopGolf Philadelphia – Northeast                  | 2022        |
| 21    | Parx Casino                               | 2001        | 5     | State Representative Jared Solomon                 | 2017        |       | Starflake Inc                                     | 2022        |
| 21    | Capital Auto Auction                      | 2001        | 5     | HopDial Phone Systems                              | 2017        |       | HOTWORX Philadelphia Grant Plaza                  | 2022        |
| 21    | James J. Anderson Construction Co., Inc.  | 2001        | 5     | TruMark Financial Credit Union                     | 2017        |       | Wendy's N. American St./Aramingo                  | 2022        |
| 21    | The Goldenberg Group, Inc.                | 2001        | 5     | Welcoming Center for New Pennsylvanians            | 2017        |       | Homewatch Caregivers of Lower Bucks County        | 2022        |
| 20    | PATH (People Acting to Help) Inc.         | 2002        | 5     | Feast of Justice                                   | 2017        |       | Aztec Fund Administration LLC                     | 2022        |
| 19    | Origlio Beverage                          | 2003        | 5     | PHL/PNE Airports                                   | 2017        |       | The Office of State Senator Jimmy Dillon          | 2022        |
| 19    | AAA Mid Atlantic                          | 2003        | 5     | Aragona & Associates at Compass Real Estate        | 2017        |       | Mahathi Infotech                                  | 2022        |
| 19    | Janney Montgomery Scott                   | 2003        | 5     | Kingdom Social Media                               | 2017        |       | Effectv   | 2022        |
| 19    | DM Intl Equipment Corp.                   | 2003        | 4     | 4 Storage 4 You at Red Lion, Inc.                  | 2018        |       | The Goldenberg Group/Whitman Square               | 2022        |
| 18    | Marshall's Philadelphia D.C.              | 2004        | 4     | Outfront Media                                     | 2018        |       | ENERTIA, LLC                                      | 2022        |
| 18    | Tiffany Diner                             | 2004        | 4     | Catering by Marios                                 | 2018        |       | Artis Senior Living                               | 2022        |
| 18    | Temple Beth Ami Synagogue                 | 2004        | 4     | Integrity Wealth Management                        | 2018        |       | Nothing Bunt Cakes                                | 2022        |
| 18    | American Paradigm Schools                 | 2004        | 4     | Gallo's Seafood                                    | 2018        |       | Philly Import/Export LLC                          | 2022        |
| 18    | Philadelphia Boat Supply Company          | 2004        | 4     | Total Benefit Solutions Inc                        | 2018        |       | Outsource Import/Export LLC                       | 2022        |
| 17    | Total Technology Resources, LLC           | 2005        | 4     | My Benefit Advisor                                 | 2018        |       | WoGeS International LLC                           | 2022        |



Train on platform at Bridge Street

## FRANKFORD IN 1922

1922 was a banner year in Frankford, the lower Northeast Philadelphia neighborhood where the Greater Northeast Philadelphia Chamber of Commerce was founded that year. Frankford was the economic engine of the Northeast at that time, as well as the region's social and cultural hub. The establishment of the Chamber of Commerce was one of several major developments in the bustling neighborhood in 1922.

Frankford began as a village that grew up around a grist mill that early Swedish settlers built in the 1660s on the Frankford Creek, where it crossed the road that came to be called the King's Highway, the main north-south route that connected Philadelphia with major cities on the eastern seaboard of the American colonies. Later renamed Bristol Pike and then Frankford Avenue, the road has been an important commercial thoroughfare for over 300 years. Frankford's location on the road helped to spur its development, as did the creek, which provided waterpower for local mills and was navigable out to the Delaware River. Frankford was incorporated as a borough in 1800 and absorbed into the City of Philadelphia in the 1854 Philadelphia city/county consolidation. The nation's first savings and loan institution, Oxford Provident Savings & Loan, was founded in Frankford in 1831 to help its growing population purchase homes.

By the early twentieth century, when most of the Northeast was still farmland and open space, Frankford was a booming industrial and commercial center, its many mills and factories employing thousands of workers. Banks, real estate agencies, shops, and stores served local residents, while cultural institutions such as the Women's Literary Club

of Frankford, the Frankford Symphony, and the Historical Society of Frankford enriched the community.

1922 saw the completion of the Frankford War Memorial, the impressive monument honoring those who served in World War I. That same year the Frankford Yellow Jackets, the local professional football team, captured the unofficial Philadelphia football championship, setting the stage for the team to join the new NFL two years later and win the city's first NFL championship in 1926.

The most pivotal development of 1922 by far, however, was the opening of the Frankford Elevated, the rapid transit line that terminated in Frankford, connecting it with Center City and West Philadelphia. This fundamentally changed both Frankford and greater Northeast Philadelphia, allowing people from throughout the region to quickly access Center City and making Frankford one of the city's most important transportation hubs. Thousands of commuters were now passing through Frankford on a daily basis. The El was a key factor in spurring large-scale development of the Northeast over the course of the twentieth century, with Frankford institutions providing essential services to many of the area's new residents.

The latter part of the twentieth century brought serious challenges to Frankford, as many of the industries and businesses that were the economic lifeblood of the neighborhood closed or left the area. While no longer the powerhouse it once was, a hundred years ago Frankford was the crown jewel of Northeast Philadelphia, the region's commercial, social, and cultural hub. ●

---

**Jack McCarthy** is an archivist and historian who is president of the Friends of Northeast Philadelphia History.

---





# SIDNEY KIMMEL CANCER CENTER

at Jefferson Torresdale Hospital

A National Cancer Institute (NCI)-designated cancer center, Sidney Kimmel Cancer Center – Jefferson Health is one of only two nationally ranked cancer centers in the region. Now, our cancer experts are right in your community – at Jefferson Torresdale Hospital. Our specialists provide patients with personalized support services and access to advanced clinical trials and leading-edge treatments. Appointments in 48 hours, a new state-of-the-art infusion center and world-class cancer care – all conveniently located near you.

**Schedule an appointment today.**

**215-890-3030 | [JeffersonHealth.org/Cancer](https://JeffersonHealth.org/Cancer)**



**Jefferson Health®**

*Until every cancer is cured. Starting with yours.*

JEFFERSON TORRESDALE HOSPITAL | 10800 KNIGHTS RD. | PHILADELPHIA, PA 19114



**TACONY-PALMYRA BRIDGE opens AUGUST 15th**

**Northeast - Tacony Bank  
and Trust Company**  
Member Federal Reserve System  
IN THE CENTER OF TACONY

**DODGE STEEL COMPANY**  
ELECTRIC STEEL CASTINGS  
6501 Tacony Street

**- A SHORTER ROUTE TO THE SEASHORE -**

**H. R. C. B.  
DISSTON & HESTON**  
REAL ESTATE - INSURANCE  
TACONY HOLMESBURG

**M. TUCKER & CO., INC.**  
METAL STAMPINGS  
TACONY STREET AND ROBBINS AVENUE

Page 24

Page 25

# Transportation is the Driver of Commerce

| By: Gloria Pugliese, Good Shepherd Rehabilitation

"It is generally proven that the more traffic that passes through the community, the more business that community has," according to the Northeast Philadelphia Chamber of Commerce in a 1927 newsletter. Transportation has always been a major driver of commerce. Since its inception, the Greater Northeast Philadelphia Chamber of Commerce has provided up to date information to its members and businesses in the area on transportation issues and developments. While the Chamber has featured improvements over the years, others demonstrate that many of the challenges residents and businesses face today have been around for a long time.

In 1924, The Chamber was singing the praises of the "Northeast and Tacony-Palmyra Ferries," proclaiming that "in the brief period since its inaugural on May 6, 1922, it has undoubtedly fixed itself permanently as a necessity in this part of the city." Ironically, three years later, the news broke of plans for constructing the Tacony-Palmyra Bridge, proclaiming that the Northeast "should have a bridge of its own." Touting the benefits of the new bridge, the Chamber predicted that "thousands of people wishing to come to Philadelphia from New Jersey would use this bridge which would mean travel through the Northeast." There were also plans to construct an "open cut" high speed subway line along Roosevelt Boulevard, a project that was never realized for better or worse.

While recognizing the benefits of traffic for commerce, the Chamber also recognized the need to control traffic with regulations. "Every city needs traffic regulations, the larger the city the more necessary," said the Chamber in its February 1934 newsletter when it described its

participation in the city's newly formed Traffic Bureau. In that same issue, the Chamber addressed the issue of inconsistency in transit fares, pointing out that residents in the Northeast had to pay two street car fares to get from one area to another while "other riders can travel from 69th Street to Bridge Street, or from Bridge Street to Darby for one fare."

Metered parking was touted as a boon to local shopping areas in Frankford. "It has been found that plenty of parking space is available now for people who desire to shop in this area, and it has also driven the parking hogs off the street." The cost to park in one of the metered spots in 1950 was five cents an hour.

Commerce-supporting developments in transportation infrastructure would see remarkable expansion in the 1950s. "Upon completion of the eastern and western extensions of the Turnpike, Pennsylvania will have the longest stretch of expressway in the world," proclaimed a May, 1950 article. Additional highway expansions within Philadelphia included widening Vine Street, the extension of Roosevelt Boulevard from Oxford Circle to Broad Street, improvements to the Schuylkill Expressway, and a possible elevated highway along Delaware Avenue.

A trip through the never-ending construction on Route 95 through Philadelphia is proof that transportation and infrastructure is as much an issue today as it has been for the past 100 years. As driverless cars, drones, and other technologies develop, it will be interesting to see what the next 100 years of transportation will look. ●





# Shop Small – Small Business

| By: Gloria Pugliese, Good Shepherd Rehabilitation

The Great Recession of 2008-2009 hit small businesses particularly hard. Because they generally work with less reserve capital and are not able to access as much credit as larger companies, many struggled to get through the economic downturn. In an effort to combat these challenges, American Express spearheaded the Shop Small initiative by promoting Small Business Saturday in 2010. The campaign focused on encouraging shoppers to patronize small businesses on the Saturday after Thanksgiving to bring them more of the holiday shopping market. The initiative gained momentum, and a year later received Congressional support in the form of a Senate resolution as well as support from officials in all 50 states.

Since its inception, the initiative has grown beyond the Saturday after Thanksgiving to promote shopping at small, local businesses throughout the year. In addition, American Express and other websites

provide resources to identify independently owned restaurants for diners to patron.

Organizations like the Greater Northeast Philadelphia Chamber of Commerce serve as Neighborhood Ambassadors to promote the Shop Small initiative in their local communities during Small Business Saturday and throughout the year.

In fact, the Chamber has promoted Northeast Philadelphia businesses since its beginning, and over the past 100 years has supported and promoted initiatives and improvements in support of small businesses. In April of 1950, an article in the Chamber newsletter celebrated the benefits of the installation of parking meters in Frankford noting that there would be “plenty of parking space available now for people who desire to shop in this area and it has also driven the parking hogs off the street.” ●



# NORTHEAST PHIL

| By: Gloria Pugliese, Good Shepherd Rehabilitation

**A**s we look back on the past 100 years of development in Northeast Philadelphia, it is interesting to note that in the first year of publication of the Chamber's newsletter in 1924, a feature article asked in its headline "Is Industrial Frankford of Today a Dream of Yesterday?" The article began with a nostalgic view of a bygone Frankford with "its lovely streams, the surrounding forests of which

there hardly remains a few groves, to remind us of what has been the large farms with their filed of waving grain, and the quiet, restful scenes of that period, we may perhaps imagine what business was conducted in early Frankford."

Of course, much of the business conducted in the early days of Frankford, all of Northeast Philadelphia, and indeed all of the United States was based on agriculture. However, Northeast Philadelphia would be the home to a tremendous growth and industry throughout the late 19th and into the 20th centuries.

**One of the best-known names of early industrialization in Northeast Philadelphia is that of Henry Disston.** More than the establishment of his tool-making factory, Disston's eventual purchase of approximately 275 acres provided housing for his employees. His decision in 1871 to locate his expanded tool plant in Tacony had an impact that lasts to this day, particularly in the historic architecture found in the neighborhood known as the Disston Estate.



Henry Disston & Sons, Inc, advertisement in the Saturday Evening Post, 1921, listing the products offered by the company at the time.



Henry Disston & Sons, Inc, saw blade advertisement in American Machinist, 1920.



# PHILADELPHIA DEVELOPMENT

SEARS-ROEBUCK & CO., PHILADELPHIA, PA.



Library Company of Philadelphia



*Richard Warren Sears*

**In 1920, one of the most iconic buildings of the 20th Century – the Sears Tower – opened at Adams Street and Roosevelt Boulevard.** It served as a hub of the company's booming mail order business, and as the mail order business declined, the company added a retail store in that and other locations. Although the Sears Tower itself no longer exists, the Northeast Tower Center shopping center is still identified by the smokestack of the original power plant, which is adorned with the Home Depot logo.

In addition to industrial and large commercial development, shopping districts also grew to meet the demands of a growing population. In the early 1950s, the City Planning Commission proposed 12 shopping center districts in Northeast Philadelphia, saying that the plan "provides planned locations convenient to the residents of the area and prevents future development of spot commercial areas which would disrupt the pattern of residential growth.

While all this development, and the accompanying expansion of highway infrastructure that came with it, was a boon for local businesses, there was also concerns about businesses leaving the city. As the suburban movement grew in the 1950s, there were many benefits for companies considering moving out of the city. "To flee or not to flee the big city's traffic and limited land areas is one of the foremost problems confronting industrialists today," was how the concern was expressed around the "almost epidemic proportions" of companies leaving the city. Some companies, however, chose to stay in the city, where many of their employees lived nearby.

While much has changed since the 1950s, some things have stayed the same. Shopping districts must adapt to meet the changing needs of the population even as they compete with online outlets, and businesses must consider the benefits of staying where they are or relocating as many also grapple with the question of operating remotely, in-person, or in a hybrid format. Commerce a hundred years from now may look as different as it does today from what it was like in 1922. ●

# PECO

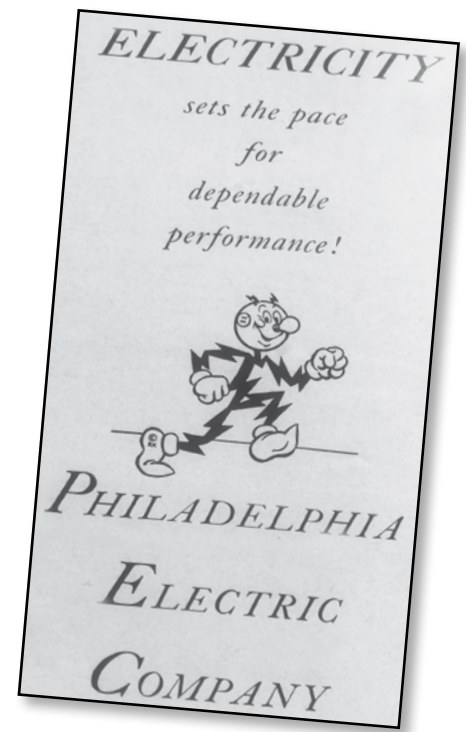
## Electrifying Philadelphia for over 140 years

| By: Pam Henshall, President, Greater Northeast Philadelphia Chamber of Commerce

PECO, formerly The Philadelphia Electric Company, has a history of serving the Philadelphia region for more than 140 years and is one of the oldest and largest utility companies in the United States.

In 1836, the first gas plant in Philadelphia was built, then shortly after, most of the city was lit by gas. Nearly 45 years later, Brush Electric Light Company installed electric arc lamps, the predecessor to Thomas Edison's incandescent light bulb, on Chestnut Street. According to encyclopedia.com, two Philadelphia high school teachers, Edwin J. Houston and Elihu Thomson, established The Philadelphia Electric Company in 1881 and started selling Houston-Thomson electric lighting systems that were widely used by many companies providing electrical service.

PECO, a subsidiary of Exelon Corporation, along with fifteen prominent Northeast Philadelphia business organizations, chartered a new chamber of commerce centering on civic and business needs in 1922. PECO and GNPCC continue to work closely as partners and focus on the business needs of the expanded Northeast Philadelphia region. ●



Reddy Kilowatt is a cartoon character that served as a corporate spokesman for electricity generation in the United States and other countries for over seven decades. Currently, the Reddy Kilowatt trademark is owned by Xcel Energy.

## Ed McBride – a “Value Added” Board Member!

| By: Daniel P. McElhatton, Esq., Law Offices of Daniel P. McElhatton, P.C.

Ed McBride was a friend to all who got to know him and he always respected those he served with on Boards. His contributions were immense and not merely financial. His insights and wide ranging experience generated wide spread awareness of his talents.

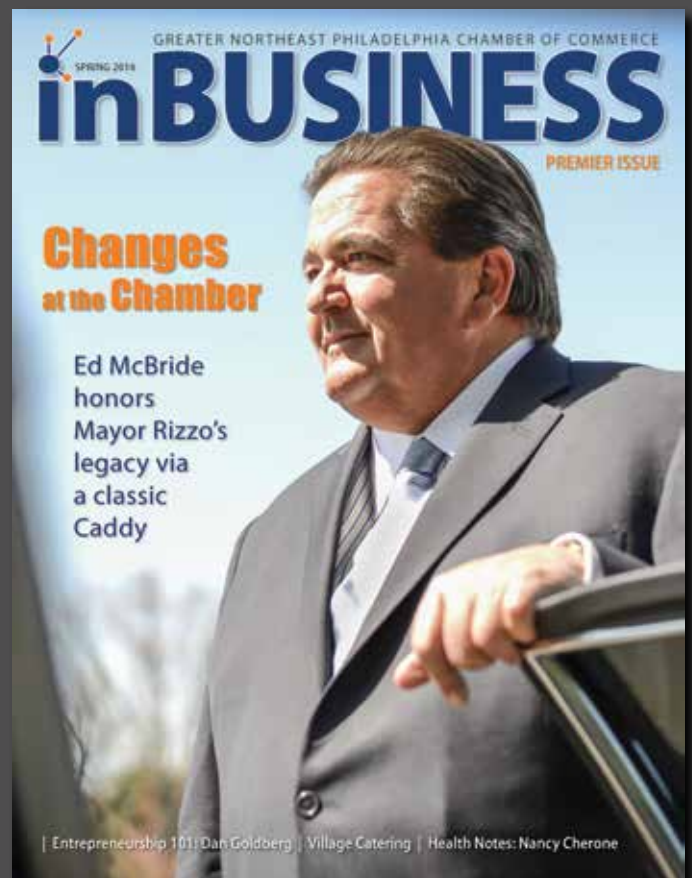
Ed's first response was usually "How can I help". Whether it was a phone call asking for a PECO financial contribution to a charity or a personal request that he serve on the committee to interview candidates for President of the Chamber-that was how Ed McBride would answer. In the over 20 years we served together not once did he decline to help. That help would also include helping individuals and small businesses with issues on their electric service. No matter if it was too small. He always took the time to understand the needs of the PECO customers-families in distress and business clients in need of some relief.

Tip O'Neill the former Speaker of the House of United States House of Representatives coined and made famous the phrase that "All politics was local". Ed McBride lived that maxim! He never once asked me whether a person seeking his intervention was a Democrat or Republican. He really didn't care -he just wanted to help.

My initial contact with Ed was when I served in the City Council and he was PECO's representative monitoring legislation in the City Council. There were numerous "lobbyists" around the Chambers of Council but few, except Ed, asked about my family and really seemed to care. His genuine interest was followed up by helping whenever and wherever he could.

While cordial and personable Ed was never a "push over". When the Chamber Board had tough issues to handle he did not shy away from expressing his position forcefully and most often convincingly! If he felt he was right he did not back down -to the benefit of the Chamber!

We will miss our friend and colleague. Thank you Ed!

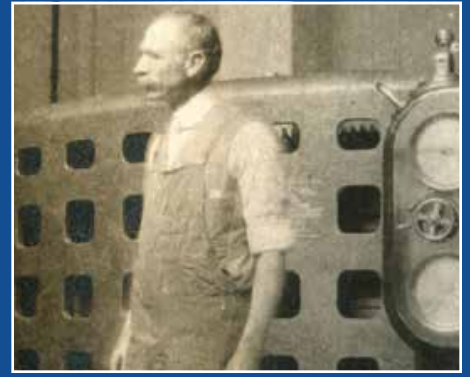




# ***Kingsbury***

## ***Engineering Bearing Solutions since 1912***

| By: Pam Henshall, President, Greater Northeast Philadelphia Chamber of Commerce



**Dr. Albert Kingsbury**

In 1912, Albert Kingsbury installed the first fluid-film thrust bearing on a turbine generator at Pennsylvania Water & Power Company's Holtwood Station and revolutionized the power industry.

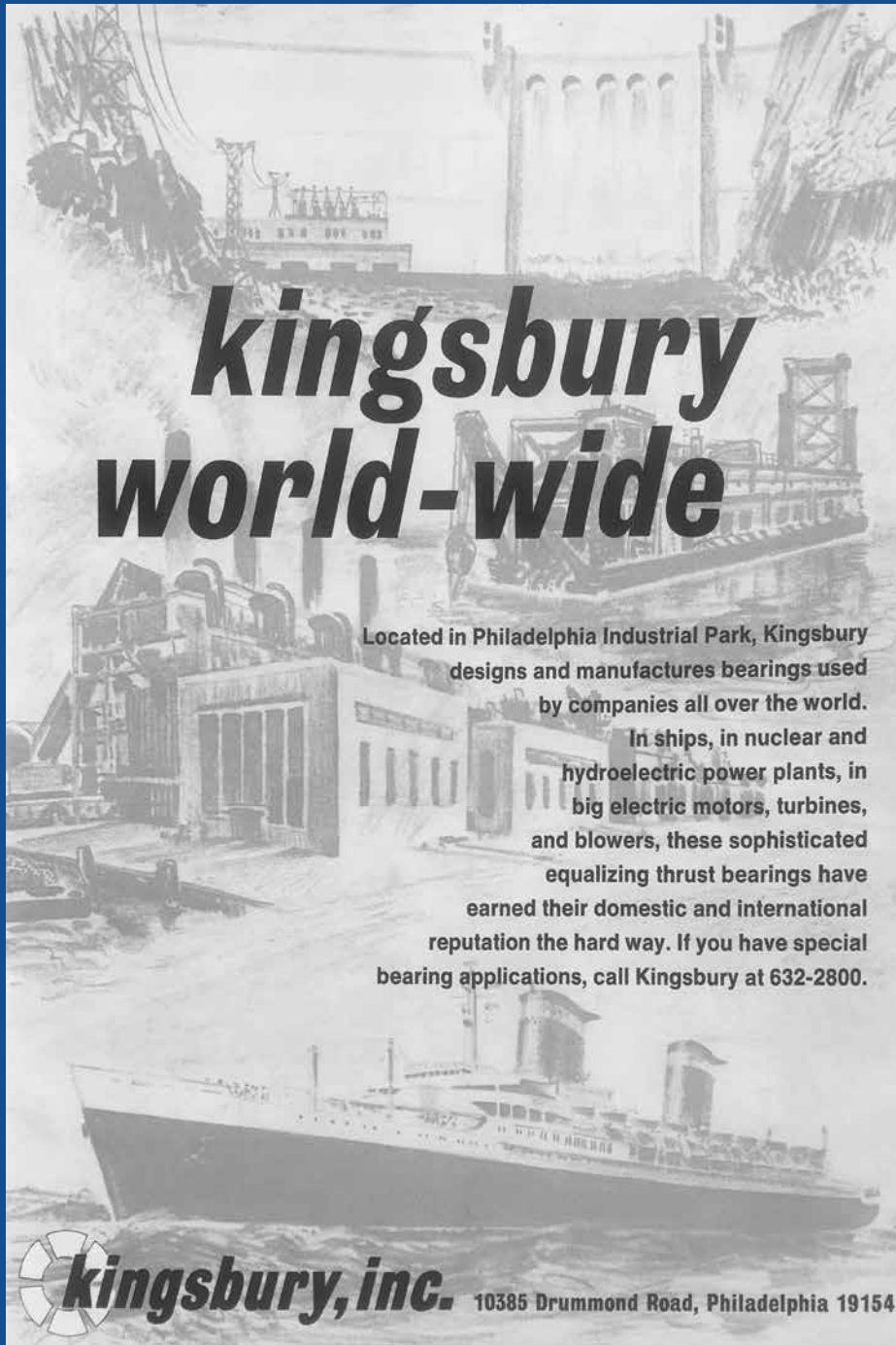
At the turn of the 20th century, Holtwood Station on the Susquehanna River near Lancaster, PA was one of the most sophisticated hydroelectric plants of its time. Each of its ten 10,000 kilowatt generators accepted 45 tons of force from the water passing through its turbines. Under these heavy loads, conventional roller bearings could not last more than two months before failing.

Facing financial ruin, the utility was desperate for a solution. Fortunately, an engineering professor and consultant named Albert Kingsbury, anticipating the need for a friction-free bearing capable of handling much heavier loads, was completing tests on his new invention, a pivoted shoe bearing that rested on a film of oil.

Holtwood invited Kingsbury to install his fluid film bearing in one unit as a test. After faltering just once, the bearing performed flawlessly and supported 100 times the load of previous bearings. The other nine generators at Holtwood were eventually retrofitted with Kingsbury bearings and soon power plants around the country followed suit.

Over the decades Kingsbury fluid-film bearings have won recognition in academic and industrial circles, all the while winning over high profile customers including major OEMs, utilities, refineries and the US Navy. Kingsbury's contributions to mechanical engineering have been recognized over the last century with 135 patents since 1915, 60 of which were awarded to Dr. Kingsbury himself. Other awards garnered by Dr. Kingsbury include the Franklin Institute's Elliott Cresson Gold Medal, Philadelphia's John Scott Medal, honorary degrees from Worcester Polytechnic and University of New Hampshire and the Modern Pioneer Award from the National Association of Manufacturing. The company was also presented with the Navy prestigious E award for manufacturing excellence. ●

Source: Kingsbury. (2021). History of Kingsbury. [www.kingsbury.com](http://www.kingsbury.com)



***kingsbury***  
***world-wide***

Located in Philadelphia Industrial Park, Kingsbury designs and manufactures bearings used by companies all over the world. In ships, in nuclear and hydroelectric power plants, in big electric motors, turbines, and blowers, these sophisticated equalizing thrust bearings have earned their domestic and international reputation the hard way. If you have special bearing applications, call Kingsbury at 632-2800.

***kingsbury, inc.*** 10385 Drummond Road, Philadelphia 19154

Founding GNPCC member Kingsbury, Inc. from 1938.



*Congratulates*  
**THE GREATER NORTHEAST  
PHILADELPHIA BUSINESS  
COMMUNITY**  
**100 YEARS OF SERVICE**



KEYSTONEOUTDOOR.COM



Law Offices of Daniel P. McElhatton, P.C.

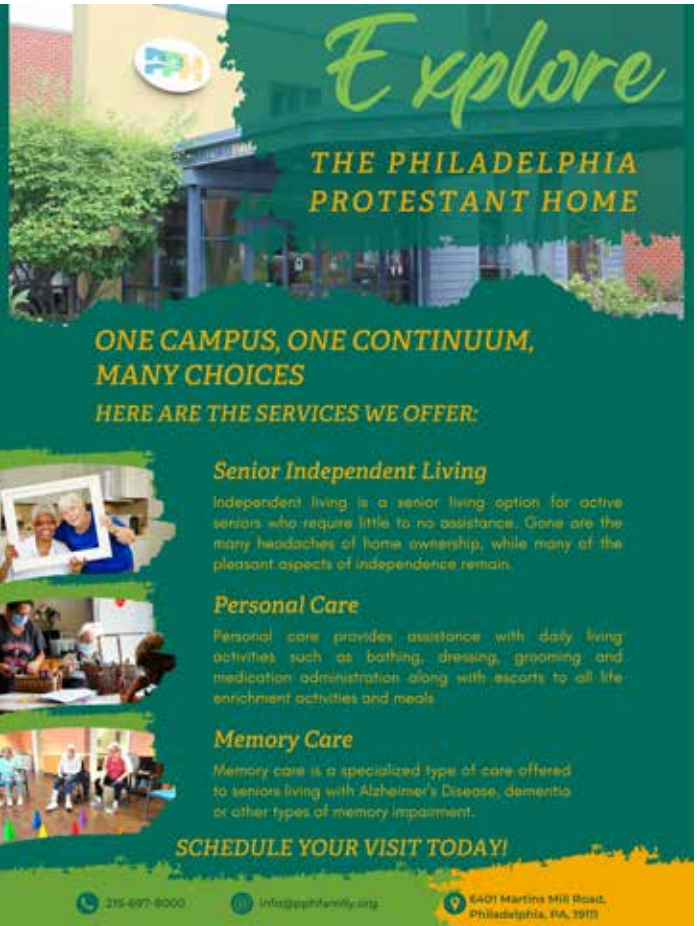
## Daniel P. McElhatton

Attorney at Law

2000 Market Street  
Suite 1400  
Philadelphia, PA 19103

Phone: 215-557-0811  
Mobile: 215-432-5060

[dpmcelhatton@mcfol.com](mailto:dpmcelhatton@mcfol.com)



**Explore**  
**THE PHILADELPHIA PROTESTANT HOME**

**ONE CAMPUS, ONE CONTINUUM,  
MANY CHOICES**  
**HERE ARE THE SERVICES WE OFFER:**

**Senior Independent Living**  
Independent living is a senior living option for active seniors who require little to no assistance. Gone are the many headaches of home ownership, while many of the pleasant aspects of independence remain.

**Personal Care**  
Personal care provides assistance with daily living activities such as bathing, dressing, grooming and medication administration along with escorts to all life enrichment activities and meals.

**Memory Care**  
Memory care is a specialized type of care offered to seniors living with Alzheimer's Disease, dementia or other types of memory impairment.

**SCHEDULE YOUR VISIT TODAY!**

215-697-8000 | [info@pphfamily.org](mailto:info@pphfamily.org) | 6401 Marlton Mill Road, Philadelphia, PA, 19133



**Our Community**  
IS OUR GREATEST INVESTMENT

Tompkins is Proud to Support the  
People and Organizations that  
Make a Difference in our Community.

**Fox Chase Branch**  
8000 Verree Road • 215-722-4566

**TOMPKINS**  
BANKING | INSURANCE | WEALTH

[TompkinsBank.com](http://TompkinsBank.com)

The Staff and Board of Directors at  
Philadelphia Federal Credit Union  
are proud to support the

**GREATER NORTHEAST PHILADELPHIA  
CHAMBER OF COMMERCE**  
AND THE  
**100<sup>th</sup> ANNIVERSARY GALA**  
*Congratulations!*

**OPEN AN ACCOUNT AT [PFCU.COM](http://PFCU.COM)**

*Not here for our profit.  
Here for yours.*

**PFCU** PHILADELPHIA  
FEDERAL CREDIT UNION  
[visit.us.at.pfcu.com](http://visit.us.at.pfcu.com)

[f](#) [t](#) [i](#) [v](#) [i](#)

Insured by NCUA



**YOUR FLEET AND COMMERCIAL  
VEHICLE SPECIALISTS**

**CONGRATULATIONS  
TO GNPCC  
ON 100 YEARS!**



**CHAPMANCARS.COM**

**Wawa**

**FOR GIVING YOUR BEST,  
WE'RE PROUD TO OFFER OURS.**



© 2016 Wawa, Inc.

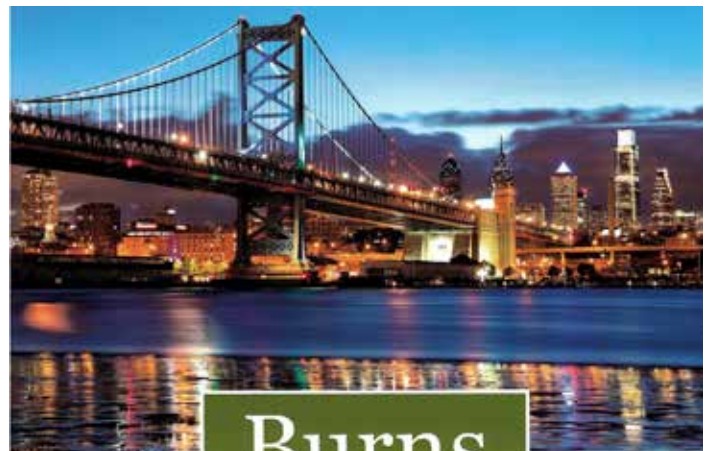
**Your Goal is to  
Go Home—We Can  
Get You There!**



**Christ's Home**

**Serving the Northeast and Bucks County for 100 years.**

1 Shepherd's Way, Suite 100  
Warminster, PA 18974-3710  
215.956.2270 • [www.ChristsHome.org](http://www.ChristsHome.org)



**Burns**  
FUNERAL HOMES

*A tradition of comfort and caring*

Columbia Ave.  
1428 East Columbia Avenue  
Philadelphia,  
Pennsylvania 19125

Phone: (215) 634-6898  
Fax: (215) 637-3080

Joseph J. Burns - Supervisor

Frankford Ave.  
9708 Frankford Ave.  
Philadelphia,  
Pennsylvania 19114

Phone: (215) 637-1414  
Fax: (215) 637-3080

Gerard J. Burns - Supervisor

Levittown  
1514 Woodbourne Road  
Levittown,  
Pennsylvania 19057

Phone: (215) 547-3040  
Fax: (215) 637-3080

Lisa J. Burns-Campbell - Supervisor

[www.burnsfuneralhome.com](http://www.burnsfuneralhome.com)



## UNMATCHED SERVICE

...and so much more!



- Absolutely FREE Personal Checking
- FREE Coin Counting<sup>1</sup>
- ATM/Debit Card on the spot
- Fee-FREE ATMs<sup>2</sup> over 55,000 Allpoint™ ATMs worldwide
- Bank Your Way in-store, online or mobile



myrepublicbank.com • 888.875.2265

Convenient Locations in

Atlantic, Burlington, Camden & Gloucester Counties, NJ and  
Bucks, Delaware, Montgomery & Philadelphia Counties, PA

<sup>1</sup>For Republic Bank customers. Some limitations or restrictions may apply for businesses. <sup>2</sup>For Republic Bank customers.



INTEGRITY  
WEALTH MANAGEMENT, LLC

Robert Streit, Financial Advisor

7 East Main Street, Suite 203  
Moorestown, NJ 08057

215-850-2695

rob@integritywealthmgmt.com

We're right  
around  
the corner.  
And always  
in yours.

For nearly 200 years, WSFS Bank has stood for one thing: Service. We're committed to doing what's right and helping the communities where we live, work and play. That's why we're honored to support the **Greater Northeast Philadelphia Chamber of Commerce 100th Gala Celebration.**



Member FDIC | wsfsbank.com

**WSFS** bank

*We Stand For Service®*

Congratulating GNPCC on 100 years of service!



WESLEY ENHANCED LIVING®



Providing Affordable Senior Living for over 130 years

Independent Living - Personal Care - Memory Care - Rehabilitation and Skilled Nursing

#### Main Line

100 Halcyon Drive  
Media, PA  
610-355-1328

#### Doylestown

200 Veterans Lane  
Doylestown, PA  
267-895-1152

#### Upper Moreland

2815 Byberry Road  
Hatboro, PA  
215-675-0103

#### Pennypack Park

8401 Roosevelt Blvd.  
Philadelphia, PA  
267-348-3345

#### Burholme

7040 Oxford Avenue  
Philadelphia, PA  
267-824-3345

#### Stapeley

6300 Greene Street  
Philadelphia, PA  
215-991-7110

5% off entrance fee for GNPCC Members!

For more information, please visit [www.WEL.org](http://www.WEL.org) or call 877-824-3935



The Wesley Enhanced Living continuing care retirement communities are non-profit, with a mission to deliver a purpose-filled life to residents.

# GNPCC ADVERTISING:

# THE EARLY YEARS

"Bargains are my hobby..."

Small wonder then that mildly—and so many others like her—depend on PTC to take her wherever she goes in Philadelphia. No bother and stress from city driving. No finding, then paying for, a spot to park. Transit is a genuine bargain from start to finish—saves both time and money, to say nothing of peace of mind.

At PTC we are working hard to give you and

your neighbors fast, convenient, dependable service at the lowest possible cost. We're nearing the completion of our \$36,000,000 modernization program, which, among other things, has brought to Philadelphia a fleet of 1000 fine new air-suspension buses, plus many other new transit facilities and service improvements. Cooperative action between the City of Philadelphia and the Company will insure continued transit progress, marked by still better service for the community.

**PHILADELPHIA  
TRANSPORTATION  
COMPANY**

200 West Wyoming Avenue  
Philadelphia 40, Pa.



**ENJOY GOING PLACES  
WITH YOUR OWN CROWD**



PTC Charter Bus Service offers many enjoyable advantages whenever your Lodge or Social Club or Church organization plans a trip as a group.

There's no more delightful or carefree way for outings, picnics, reunions and sightseeing.

PTC Charter Bus Service is safe, comfortable, convenient and, best of all, kind to the pocketbook.

For information, just call PE 5-6100 and ask for "Charter Service".



**PHILADELPHIA TRANSPORTATION COMPANY**

THE  
BETTER  
YOU  
KNOW  
IT

*Schlater's*

THE  
BETTER  
YOU'LL  
LIKE  
IT

AT  
YOUR  
STORE  
OR  
DIRECT

M  
I  
L  
K



Cor. Frankford  
Avenue and  
Sellers Street

**BREAD**



**SOLD  
UPTOWN  
ONLY AT**

**LAWSON CLOTHES**

**4745 FRANKFORD AVENUE  
CORNER FOULKROD STREET**

*A Personal Letter To*  
**Mr. Businessman:**

Let us show you how our complete, steel "Desk n' File" cabinet can expedite the affairs of your office! A retractable desk plus a safe for valuables, drawers for checks, files for letters, space for index cards, books. 2 strong outer doors under lock and key. 32" wide, 60" high, 19" deep. Heavy-gauge steel. Comes with green or gray finish.

REGULARLY \$110 **89<sup>88</sup>** SAVE 20.12!

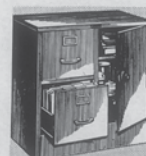
USE SEARS EASY PAYMENT TERMS TODAY



Reconditioned Like New For You!  
Smith-Corona Elite Typewriter

Price When New: 166.95 **\$99**

Model 6A or 7A demonstrator or slightly used machine, all mechanically perfect. Late models with automatic margin control, page-gauge.



Save 7.96! Cabinet  
For Home or Office

Reg. 44.95 **36.99**

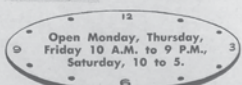
Has combination dial lock... ideal inexpensive protection for homes, offices. In gray, mist green or tan.



Steel Drop-Leaf  
Typewriter Table

Reg. 6.95 **4<sup>99</sup>**

Offices need it for adding machines, typewriters, calculators; kitchens need it for electric mixers. Drop leaf each side.



Satisfaction guaranteed  
or your money back

**SEARS**

NORTHEAST  
Roosevelt Blvd.

WEST PHILA.  
Market at 64th

CAMDEN  
Adm'l Wilson Blvd.

FREE  
PARKING





# Holy Family

UNIVERSITY

*Serving Northeast Philadelphia Since 1954*

Join us for a Fall 2022 Open House on  
**SUNDAY, NOVEMBER 6**



**REGISTER ONLINE**  
at [holyfamily.edu/openhouse](https://holyfamily.edu/openhouse)  
or by scanning the QR code





# NEXT-LEVEL HEART CARE WITH HEART.

We are creating a comprehensive heart and vascular program that stacks up to anyone's. With next-gen cardiologists, advanced technologies, and specialized care like transthoracic studies in our accredited heart station/echo lab. And we're building it all around our core beliefs and values to ensure every service we are able to provide is delivered with compassionate caring and the utmost respect for patients.

**Around the corner. Beyond expectations.**



[trinityhealthma.org/naz-heart](https://trinityhealthma.org/naz-heart)



Trinity Health  
Mid-Atlantic

Nazareth  
Hospital